

# WELLINGTON RESERVE OFFICE PARK

LYING IN SECTION 12, TOWNSHIP 44 SOUTH, RANGE 41 EAST, VILLAGE OF WELLINGTON, PALM BEACH COUNTY, FLORIDA,  
BEING A REPLAT OF TRACT 5 AND A PORTION OF TRACT 6, BLOCK 18, PALM BEACH FARMS COMPANY PLAT NO. 3  
AS RECORDED IN PLAT BOOK 2, PAGES 45 THRU 54, INCLUSIVE, PUBLIC RECORDS OF PALM BEACH COUNTY, FLORIDA.  
SHEET 3 OF 3                      NOVEMBER, 2004

NORTHEAST CORNER OF SECTION 12, TOWNSHIP 44 SOUTH, RANGE 41 EAST

NE. CORNER OF BLOCK 18

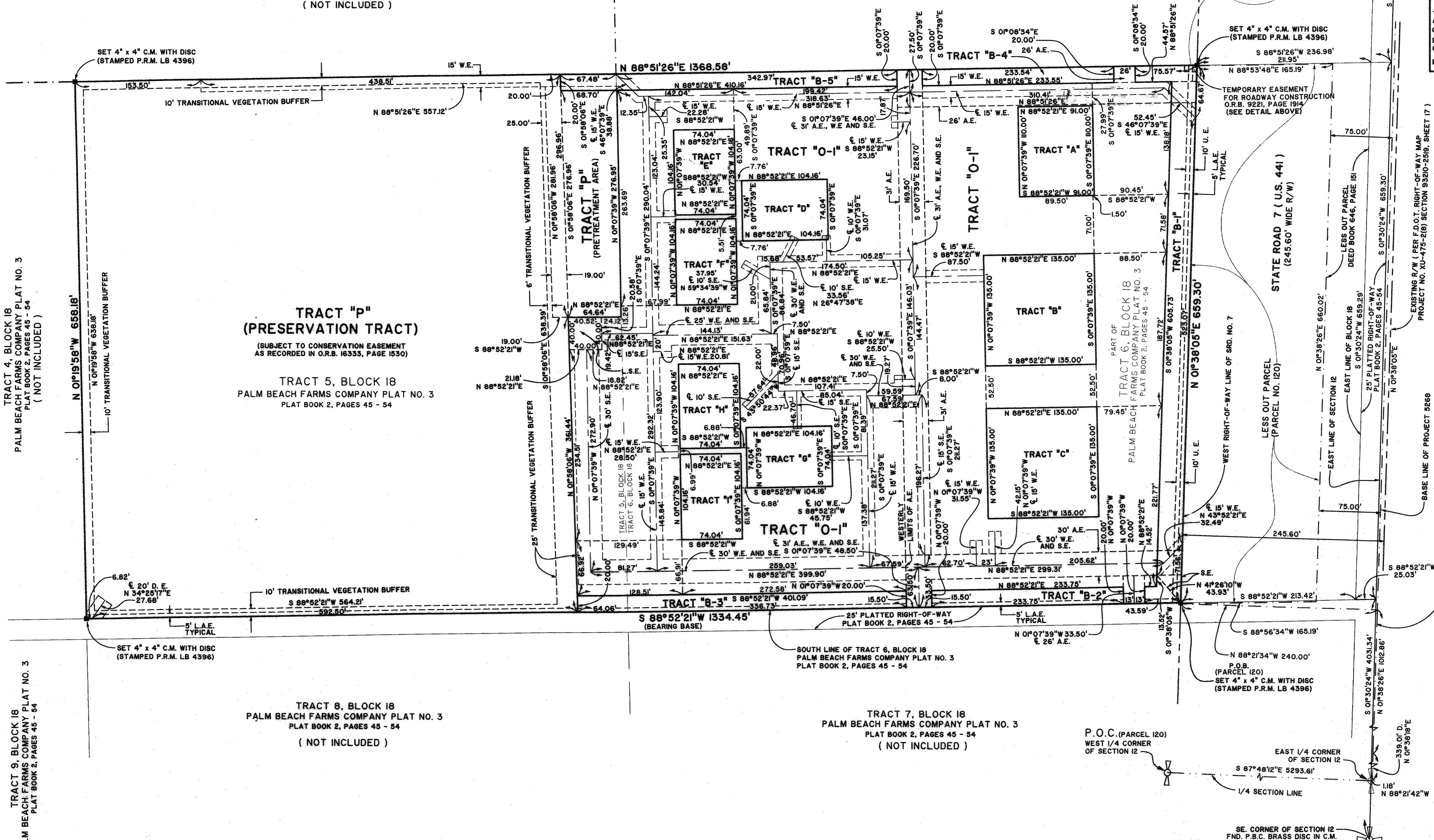
180

STATE OF FLORIDA                      SS  
COUNTY OF PALM BEACH  
THIS PLAT WAS FILED FOR RECORD AT \_\_\_\_\_  
M., THIS DAY OF \_\_\_\_\_ 2004  
AND DULY RECORDED IN PLAT BOOK NO. \_\_\_\_\_  
ON PAGE \_\_\_\_\_  
DOROTHY H. WILKEN,  
CLERK OF THE CIRCUIT COURT  
BY \_\_\_\_\_ D.C.

BLACK DIAMOND - PHASE I  
PLAT BOOK 94, PAGES 83 - 91  
(NOT INCLUDED)

TRACT I, BLOCK 18  
PALM BEACH FARMS COMPANY PLAT NO. 3  
PLAT BOOK 2, PAGES 45 - 54  
(NOT INCLUDED)

TEMPORARY EASEMENT  
FOR ROADWAY CONSTRUCTION  
O.R.B. 9221, PAGE 1914  
DETAIL  
NOT TO SCALE



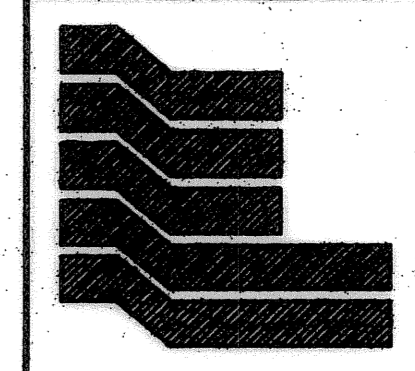
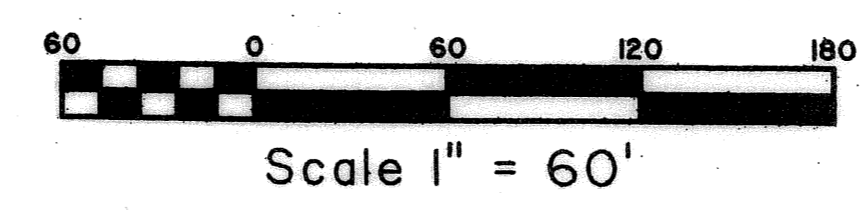
TRACT 4, BLOCK 18  
PALM BEACH FARMS COMPANY PLAT NO. 3  
PLAT BOOK 2, PAGES 45 - 54  
(NOT INCLUDED)

TRACT "P"  
(PRESERVATION TRACT)  
(SUBJECT TO CONSERVATION EASEMENT  
AS RECORDED IN O.R.B. 16333, PAGE 1530)  
TRACT 5, BLOCK 18  
PALM BEACH FARMS COMPANY PLAT NO. 3  
PLAT BOOK 2, PAGES 45 - 54

TRACT 8, BLOCK 18  
PALM BEACH FARMS COMPANY PLAT NO. 3  
PLAT BOOK 2, PAGES 45 - 54  
(NOT INCLUDED)

TRACT 7, BLOCK 18  
PALM BEACH FARMS COMPANY PLAT NO. 3  
PLAT BOOK 2, PAGES 45 - 54  
(NOT INCLUDED)

TRACT 9, BLOCK 18  
PALM BEACH FARMS COMPANY PLAT NO. 3  
PLAT BOOK 2, PAGES 45 - 54



**Landmark Surveying & Mapping Inc.**  
1850 Forest Hill Boulevard  
Ph. (561) 433-5405 Suite 100 W.P.B. Florida  
LB # 4396

**WELLINGTON RESERVE  
OFFICE PARK**